



Protecting and Supporting Children and Young People - Implementation Procedures

Context

The NSW Government recognises that care and protection for children and young people is a shared responsibility. It begins with parents, but when government support becomes necessary, it is not the sole responsibility of community services but a collective responsibility.

Keep Them Safe: A shared approach to child wellbeing provides the framework for parents, communities, government and non-government agencies to work together to support children and families.

Objectives - Policy statement

1.1 Education has an important role to support children and young people and to identify where problems arise that may put their safety, welfare or wellbeing at risk.

1.2 All staff have a responsibility to report risk of harm concerns about children and young people, within their roles, and to provide support to children and young people.

1.3 Child protection reforms introduce an obligation for government and non-government agencies to coordinate decision making and delivery of services.

Responsibilities

The Principal

Training

- ensure all staff have participated in an initial child protection induction and an update during the past year
- ensure all staff are aware of the indicators of abuse and neglect of children and young people
- ensure all staff are aware of their obligation to advise the principal or workplace manager of concerns about the safety, welfare and wellbeing of children and young people that arise during the course of their work
- ensure that all staff are aware of their mandatory obligation to report suspected risk of significant harm and of the procedures for doing so

Reporting

- use appropriate tools to inform decision making, such as the online Mandatory Reporter Guide, professional judgment or specialist advice, where there are concerns about risk of harm
- determine whether concerns about the safety, welfare or wellbeing of children or young people constitute risk of significant harm and, if they do, report these to Family and Community Services
- seek advice from the Child Wellbeing Unit where there is uncertainty about whether concerns amount to risk of significant harm
- contact the Child Wellbeing Unit about the safety, welfare and wellbeing of children and young people where:
 1. there are concerns about risk of harm, that do not meet the threshold of significant harm but are not trivial
 2. the Mandatory Reporter Guide indicates this should be done
 3. a case has been reported to Family and Community Services and did not meet the risk of significant harm threshold
 4. there is an observable pattern of cumulative harm that does not meet the threshold of significant harm.

Supporting children and young people

- establish effective systems in their workplace for:
 1. child protection concerns to be identified in the course of the work of staff, reported and action taken, where appropriate, so vulnerable children and young people are supported
 2. reasonable steps to be taken to coordinate decision making and coordinate services to children and young people and their families with other local service providers, if required
 3. collaborative work with other agencies for the care and protection of children and young people in ways that strengthen and support the family and in a manner that respects the functions and expertise of each service provider
- exchange relevant information to progress assessments, investigations and case management as permitted by law
- use best endeavours in responding to a request for a service from Family and Community Services provided that the request is consistent with departmental responsibilities and policies.

Employees

Training

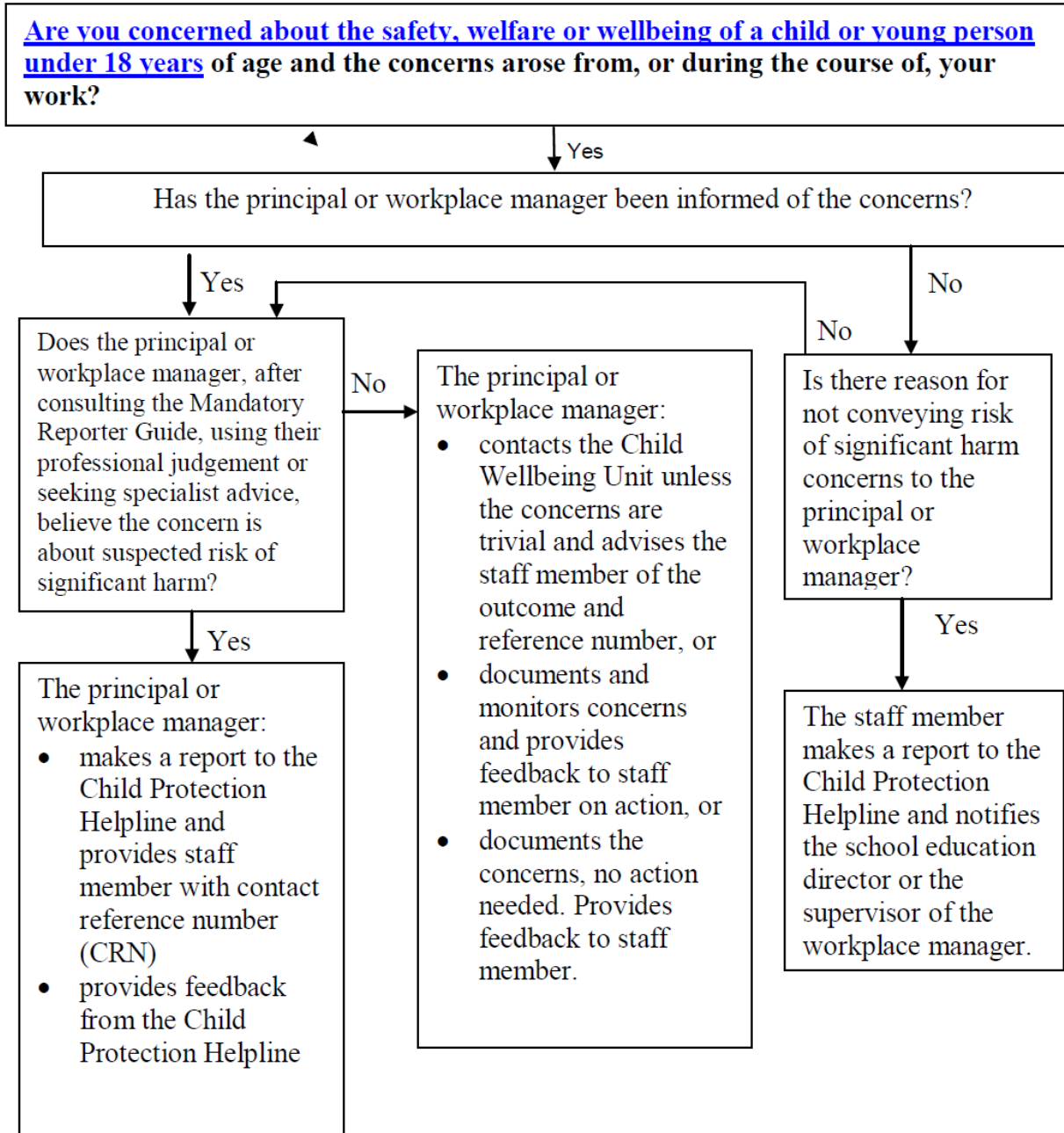
- participate in a child protection induction and in annual updates. This includes all staff – principals, workplace managers, teaching and non-teaching staff, part-time, temporary and casual staff and those who join during the year

Reporting

- adhere to mandatory procedures for conveying risk of harm concerns to the principal or workplace manager
- adhere to mandatory procedures for reporting risk of significant harm to Family and Community Services
- ensure, where they have reported any risk of significant harm concerns to the principal or workplace manager, that the principal or workplace manager has reported those concerns to Family and Community Services
- report directly to Family and Community Services if they believe the principal or workplace manager has not reported risk of significant harm concerns to Family and Community Services, and they still have concerns about risk of significant harm
- ensure that any relevant information that they become aware of, subsequent to a report being made to Family and Community Services or following contact with the Child Wellbeing Unit, is provided to Family and Community Services or the Child Wellbeing Unit respectively. If the additional information forms concerns about risk of significant harm a report must be made to Family and Community Services

Supporting children and young people

- cooperate with reasonable steps to coordinate service delivery and decision-making with other relevant service providers
- avoid undertaking any investigation of the circumstances giving rise to a report where risk of significant harm has been reported, without the express prior approval of the relevant Family and Community Services case officer
- inform students, including apprentices or trainees, of their right to be protected from abuse and of avenues of support if they have concerns about abuse.



Note: If a staff member has reasonable doubt that the report about suspected risk of significant harm has been made within the required reporting time to the Child Protection Helpline, the staff member then makes the report to the Child Protection Helpline and notifies the director public schools or the supervisor of the workplace manager.

Protecting and supporting children and young people procedures - Flowchart

For use by principals, workplace managers, TAFE and AMES counsellors

